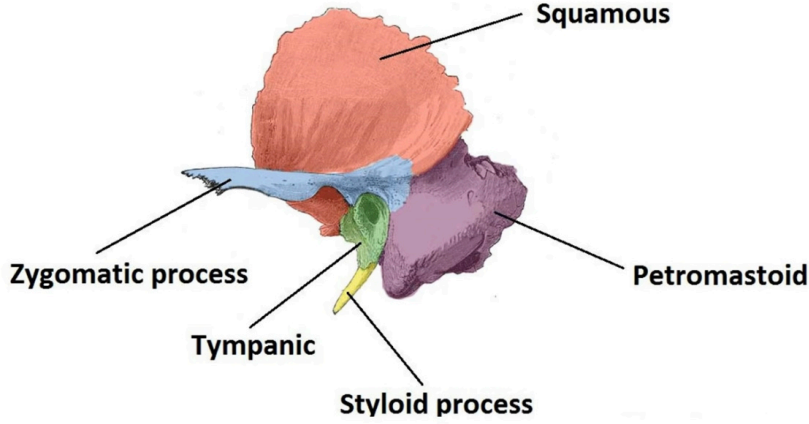
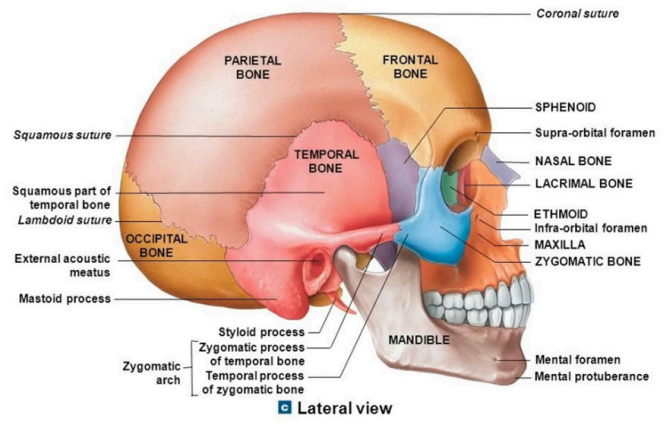


Os Temporale:

Kafatasının yan ve alt kısmında bulunur.

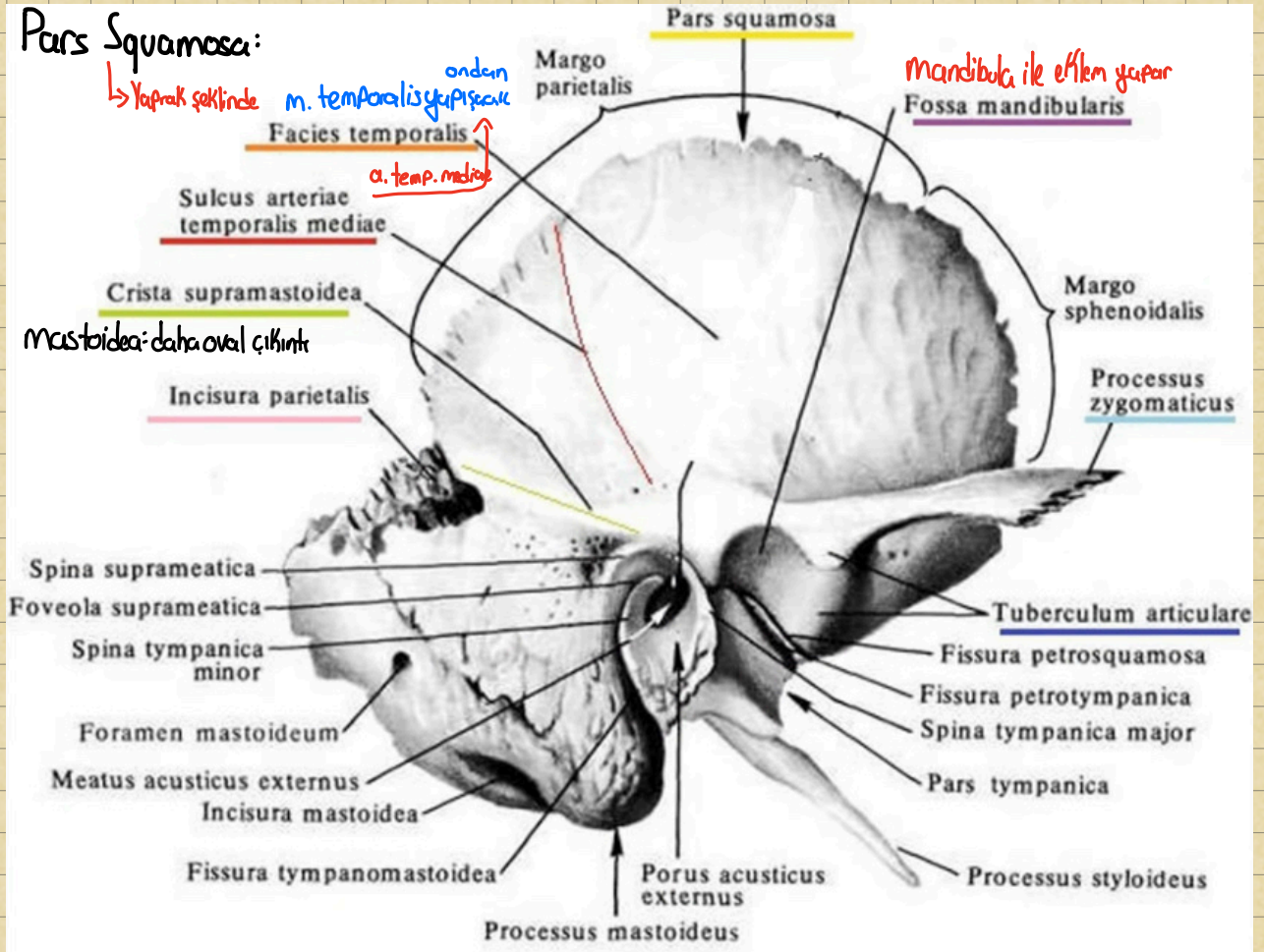
Pars Squamosa Pars Petrosa
 Pars Petromastoidea Pars Mastoidea
 Pars Tympanica
 Processus Styloideus



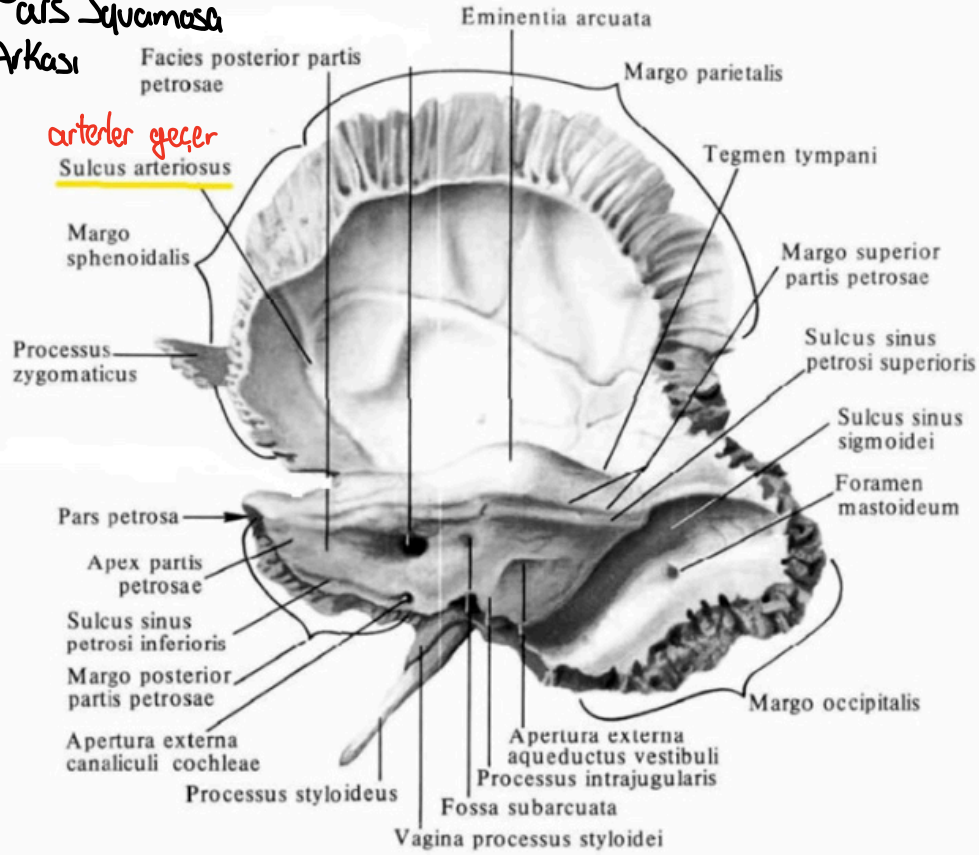
Pars Squamosa:

↳ Yaprak şeklinde
 m. temporalis yapışacak
 a. temp. media

mandibula ile eklem yapar

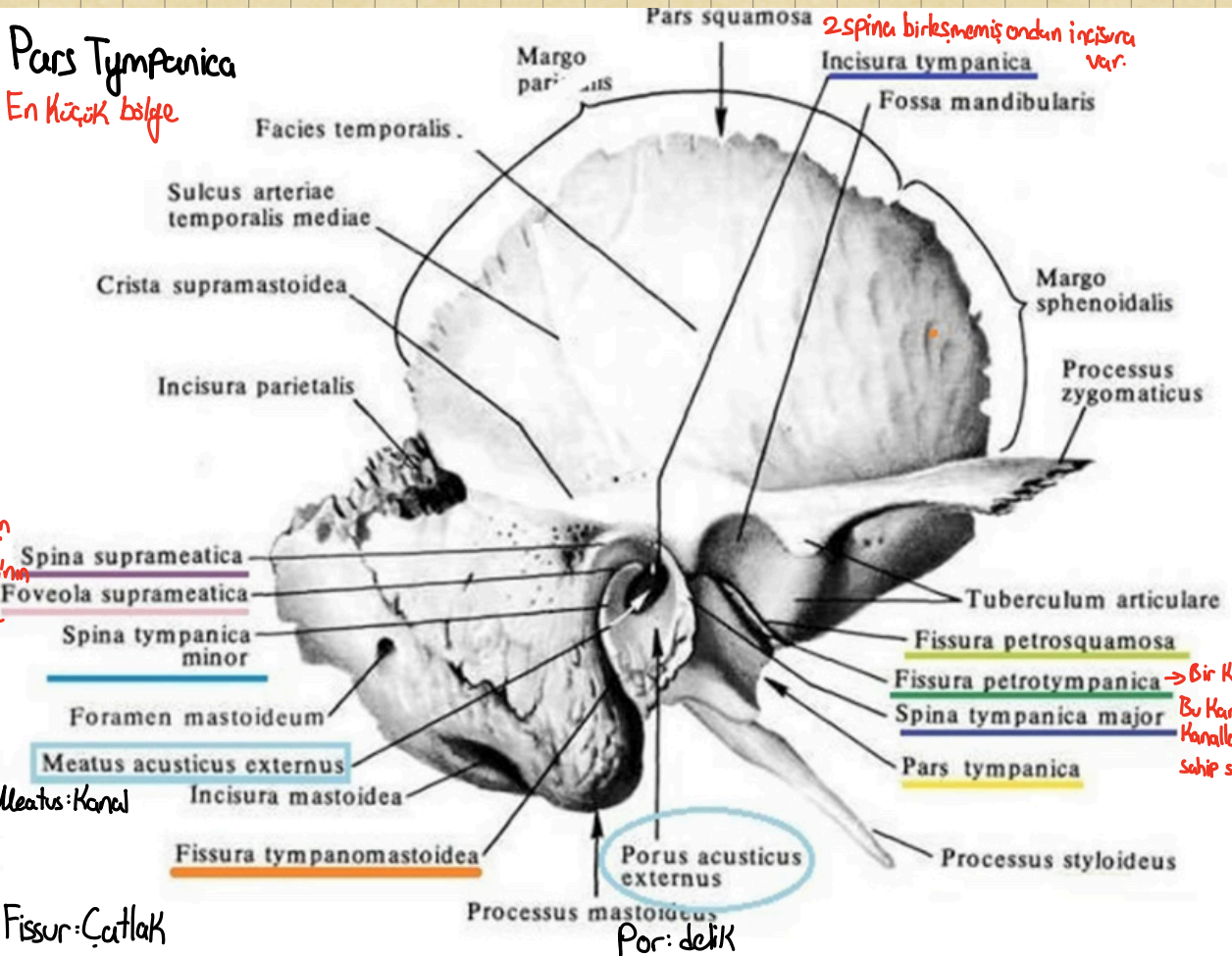


Pars Squamosa Arkası

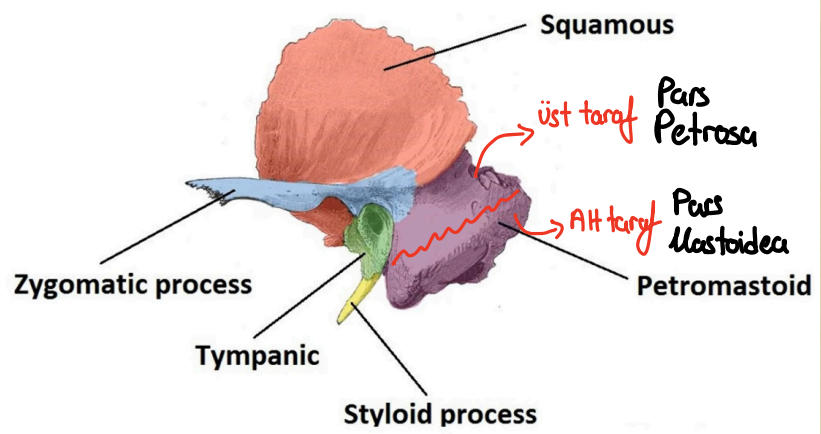
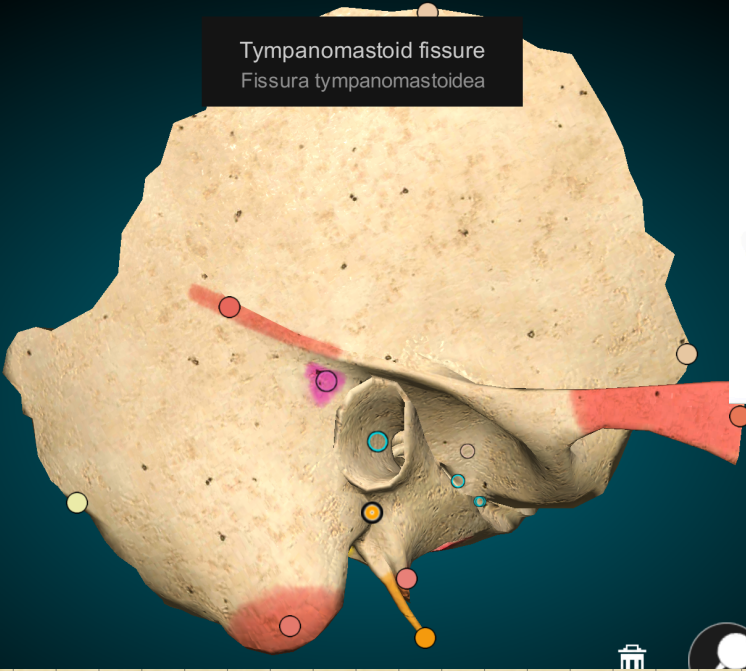


Pars Tympanica

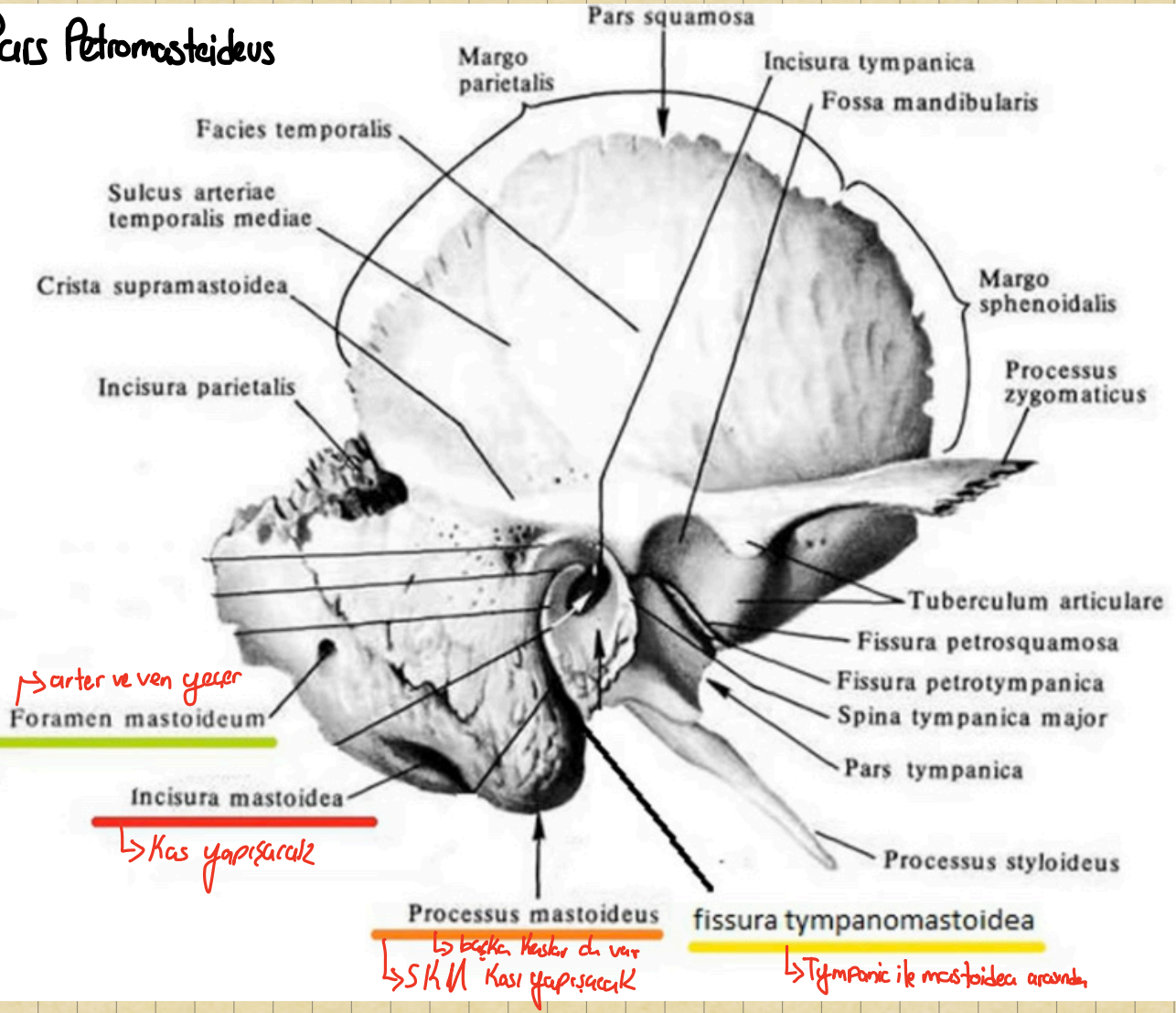
En küçük bölge

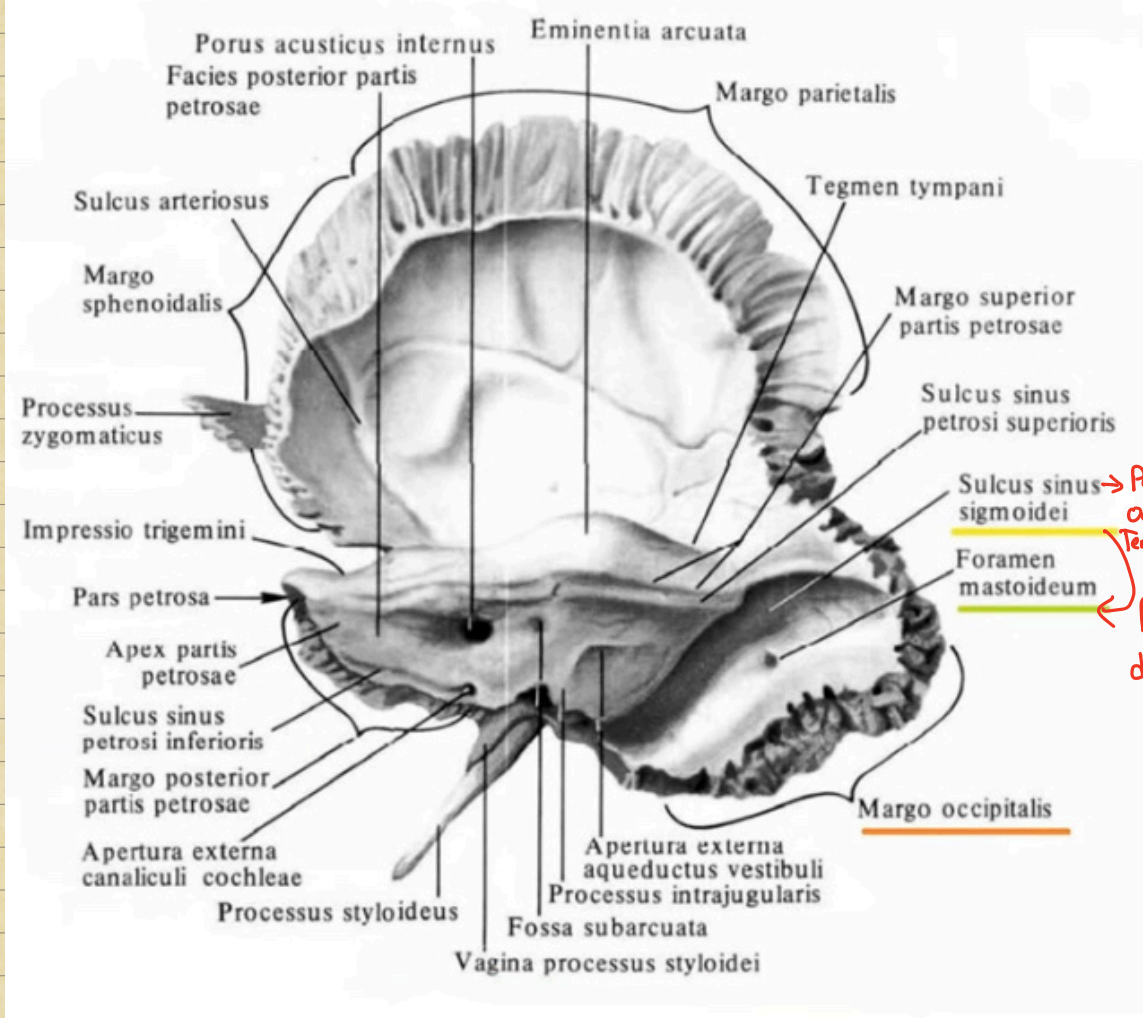


Tympanomastoid fissure
Fissura tympanomastoidea

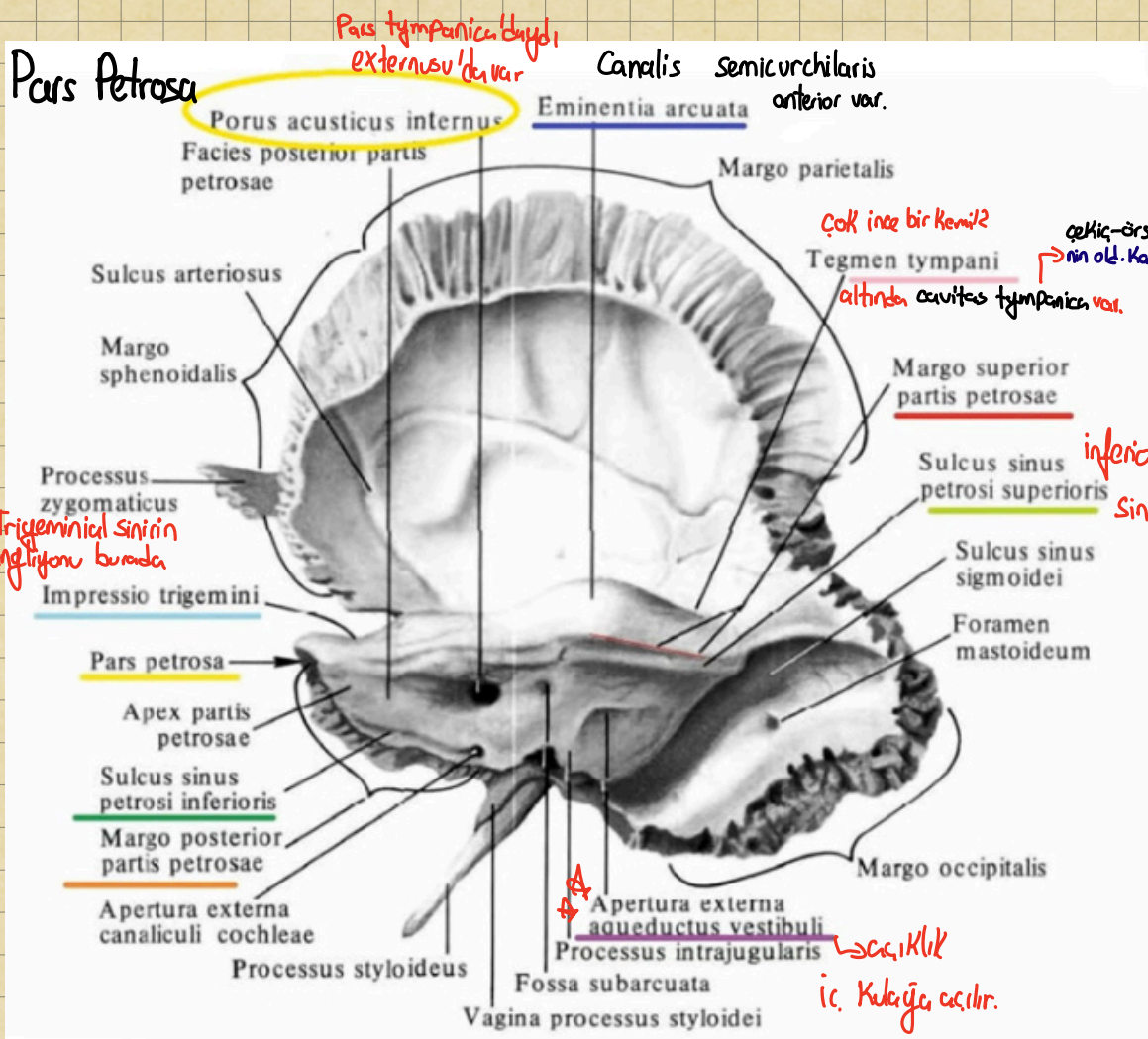


Pars Petromastoideus





→ Parafetal
ocipital
Temporal
Buradan geçen
damarlar bu deliğe
girer



Pars tympanica büyük
externusu'da var

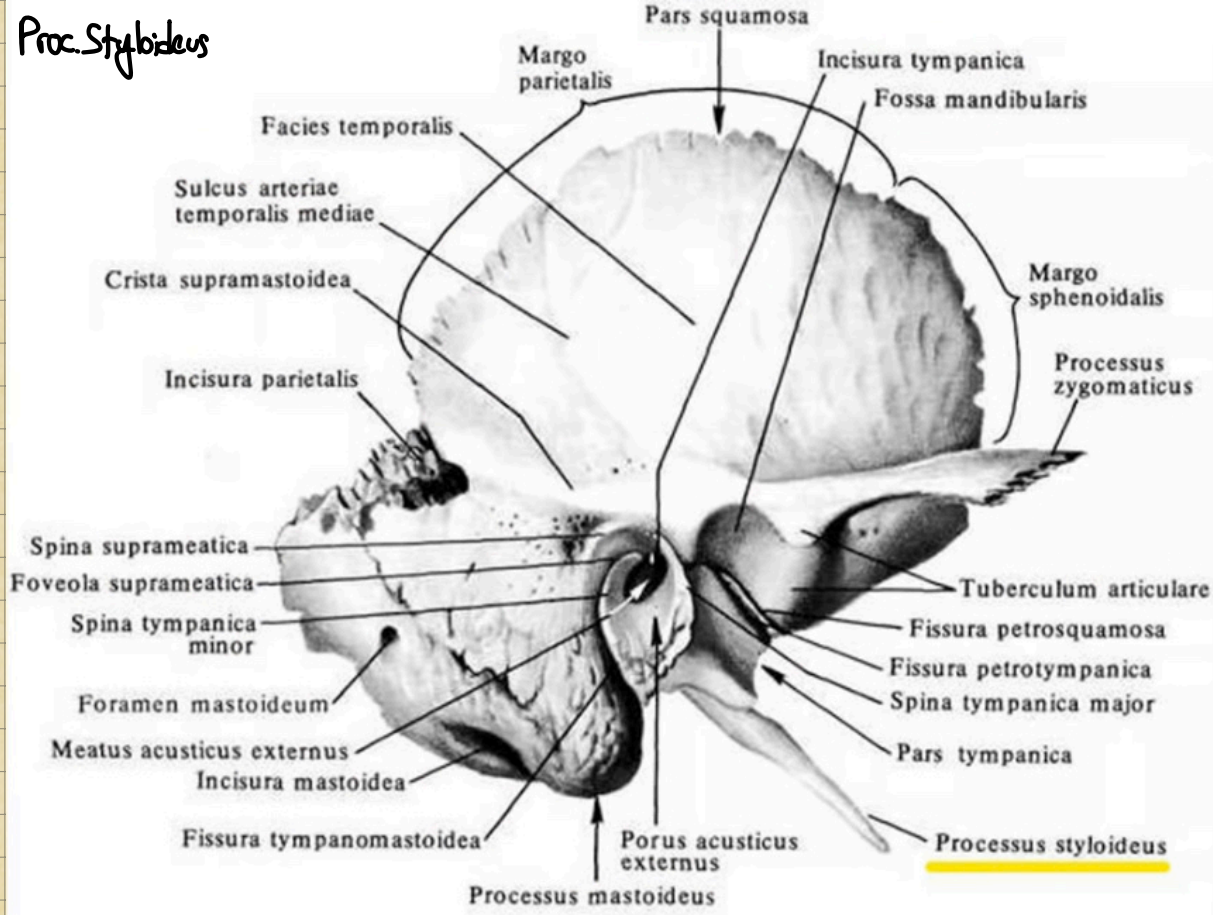
çok ince bir kemik?
çelik-örs-üzengi
nin old. kanal
altında cavitas tympanica var.

★ Trigeminal sinirin
ganglionu burada

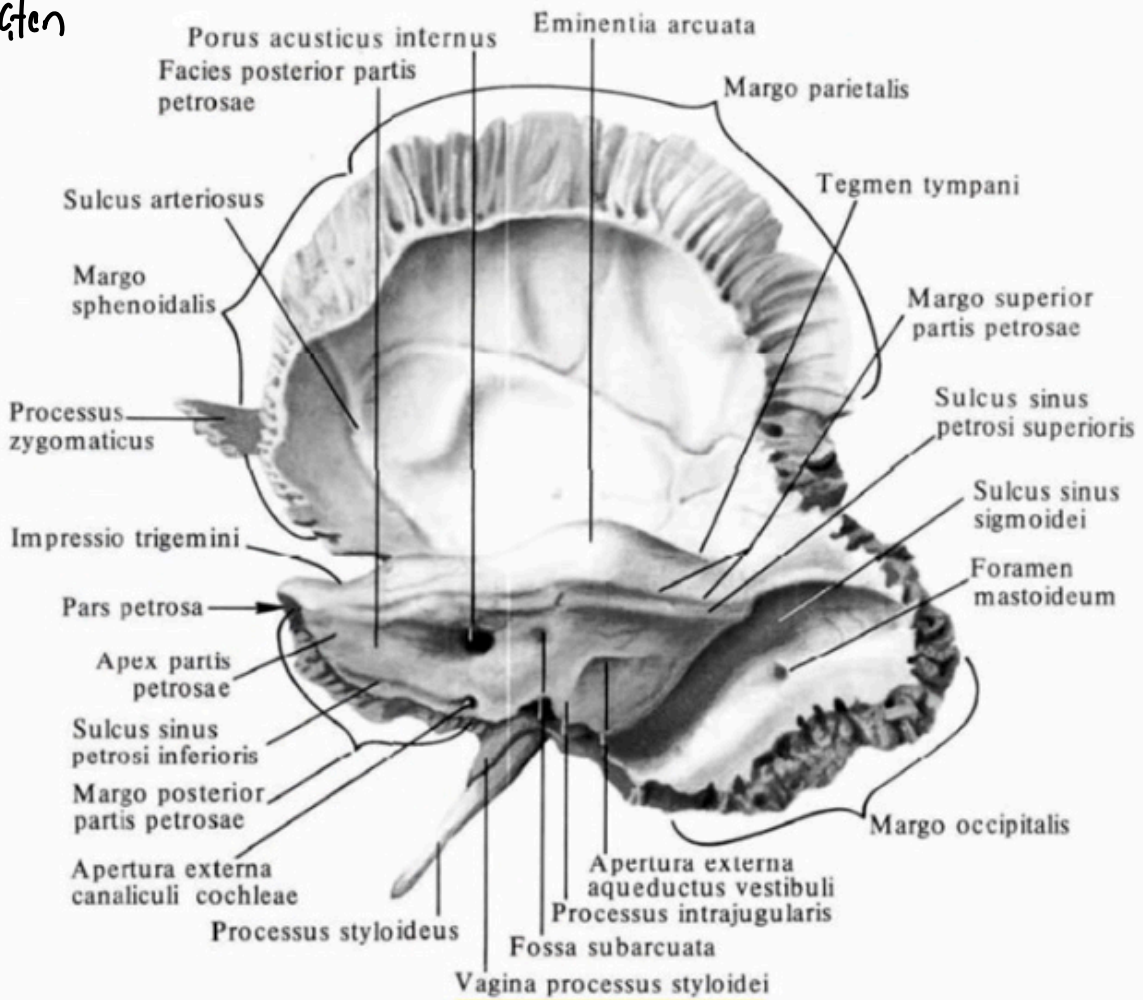
inferioristlikle aynı
sınırlar olacak

↳ açıklık
ic. Kulağa girer.

Proc. Styloideus



İçten



↳ Daha Kalın Kısm